

Wascomat / Aqua Clean

461 Doughty Boulevard, PO Box 960338, Inwood, NY 11096-0338



TECHNICAL INFORMATION

TI-1065A

INSTRUCTIONS FOR INSTALLING MÜNZPRÜFER DROP COIN METER ON "W" AND "EMERALD" SERIES 75, 105, 125, 185 AND 244 WASHERS

WARNING: THESE TECHNICAL INSTRUCTIONS ARE INTENDED TO ASSIST QUALIFIED, EXPERIENCED SERVICE PERSONNEL ONLY! IMPROPER SERVICING OF MACHINERY MAY RESULT IN HAZARDOUS CONDITIONS, PERSONAL INJURY, AND LOSS OF LIFE OR PROPERTY. PERSONS NOT TRAINED, AND PERSONS UNFAMILIAR WITH WASCOMAT LAUNDRY MACHINES, SHOULD REFER SERVICING TO QUALIFIED PERSONNEL.

MACHINES AFFECTED: "W" and "EMERALD" series 75, 105, 125, 185 and 244 washers. Note that this drop coin meter can only be installed in machines equipped with coin meter housing 408801 (which has removable faceplate 408601).

PARTS REQUIRED: For "W" series (fixed-program, electro-mechanical timer) machines:
Drop coin meter 080489 (110 volt)
Drop coin meter 080488 (220 volt)
OR: For "EMERALD SERIES" (electronic-timer) machines:
Coin acceptor 080473

INSTRUCTIONS:

1. **DISCONNECT ELECTRICAL POWER FROM THE MACHINE.**

2. Remove the machine's top panel.

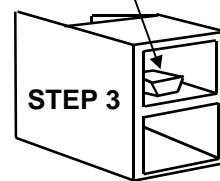
3. If present, remove and discard the coin funnel and original faceplate adapter.

4. From the front of the machine, hook the lower edge of the meter faceplate onto the bottom edge of the top meter housing opening. Secure in place with the two locking nuts provided.

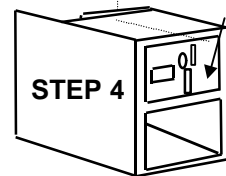
5. Connect the two spade terminals, on the harness supplied with the coin meter, to the blocking coil terminals on the side of the coin acceptor.

6. Mount the coin acceptor onto the faceplate from the rear, aligning the faceplate springs with the slots in the acceptor. Push firmly to insure that the acceptor locks onto the faceplate. Push the coin return button on the meter to check for proper mounting.

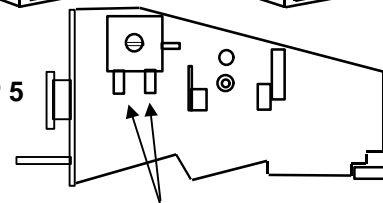
REMOVE AND
DISCARD FUNNEL



METER
FACEPLATE



STEP 5



BLOCKING COIL TERMINALS

ELECTRICAL CONNECTIONS:

For all "W" series (fixed-program, electro-mechanical timer) machines, use steps 5 through 13. For "EMERALD SERIES" (electronic timer) machines, go to step 14.

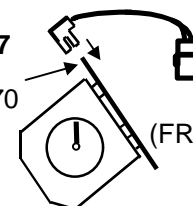
7. For W244 only, go to step 8.

For all other models, connect the five-position card-edge connector, on coin meter harness #1, to location X70 on the timer. Note that although the connector is keyed, it will fit on the timer circuit board two different ways. Install the harness as shown below, with the wires facing toward the coin meter.

COIN METER HARNESS #1

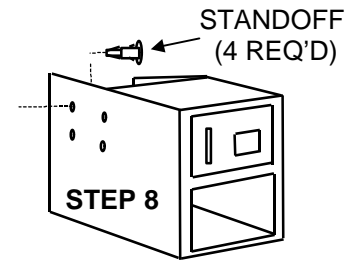
STEP 7

X70



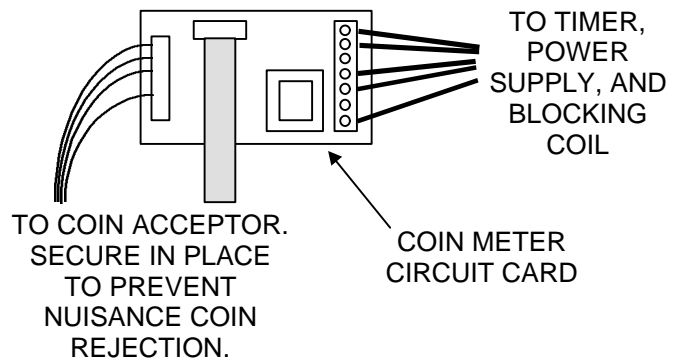
TIMER
(FRONT VIEW)

8. Locate the four holes, in the side wall of the coin meter housing, which match with the meter circuit card's mounting holes. Insert the four circuit card standoffs (supplied) into these holes from the inside of the meter housing. Press firmly to insure that the standoffs lock into the meter housing wall.

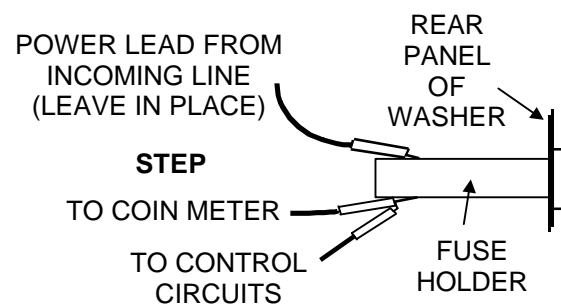


9. Align the holes in the coin meter circuit card with the standoffs installed in step 6 (orient the coin meter circuit card so that the dip switches are easily accessible after mounting). Push the coin meter circuit card onto the four standoffs. Press firmly to seat, taking care to avoid damaging the circuit card.
10. On W244 washers, plug the six-pin plug on the coin meter harness into the matching coin meter plug in the control tray of the washer. On other models, connect together the six-pin plugs on the two coin meter harnesses. Insure that the locking tabs on the connectors properly engage.

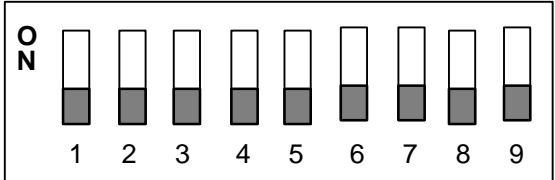
11. Plug the two wiring harnesses, which come from the coin acceptor, into their mating connectors on the coin meter circuit card. **To prevent rejection of good coins, use wire ties to insure that these two harnesses do not touch the sides of the coin acceptor mechanism.** Plug the seven-pin connector on the main wiring harness into the coin meter card, as shown.



12. Connect the piggy-back-spaded wire from the seven-position connector on the coin meter circuit card, in place of that wire (typically #901) which is connected to the LOAD SIDE of the line 1 control circuit fuse holder. Connect the wire removed from the fuse holder to the piggyback spade on this black wire.



13. To select the desired amount to start, set the "DIP" switches on the meter circuit card according to the table. Since the coin mechanism only accepts quarters, the vend price must be set to an even multiple of 25 cents.

SWITCH #								
	1	2	3	4	5	6	7	8
VALUE	.05	.10	.20	.40	.80	1.60	3.20	6.40

CONTINUE WITH STEP 15

STEP 14 APPLIES TO “*EMERALD SERIES*” ELECTRONIC-TIMER MACHINES ONLY:

14. If the coin acceptor has RED, ORANGE, and BLUE wires, connect these wires (from the left-hand meter sensor on dual-slot coin meters) to the terminal block on the coin meter housing, as follows:

The RED wire to terminal “1”
The ORANGE wire to terminal “2”
The BLUE wire (on dual-coin drops connect BOTH blue wires) to terminal “3”

On dual-slot coin meters, connect the remaining two wires from the right-hand meter sensor to the terminal block as follows:

The RED wire to terminal “4”
The ORANGE wire to terminal “5”

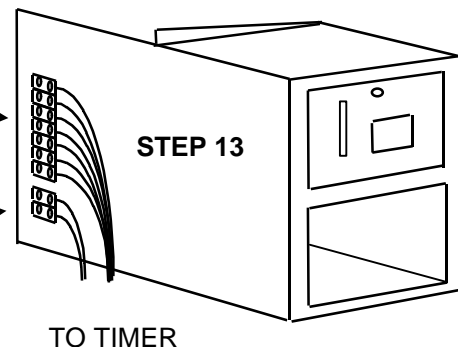
OR

If the coin acceptor has GREEN, RED, and BLUE wires, connect these wires to the terminal block on the coin meter housing as follows:

The GREEN wire to terminal “1”
The RED wire to terminal “2”
The BLUE wire to terminal “3”

CONNECT COIN METER TO 7
POSITION TERMINAL BLOCK AS
INSTRUCTED.

LINE VOLTAGE TERMINALS!
(INSTALLED ON SOME MODELS)
MAKE NO CONNECTION!!



15. Replace the machine's top panel
16. Restore power to the machine. On “*Emerald Series*” machines, program the electronic timer for the desired amount to start (see Operating and Maintenance Manual for your machine).

NOTE: For machines equipped with dual-coin (quarter and dollar) Canadian coin drops, machine prices are programmed in monetary amount, rather than number of coins required to start. For example, on dual-coin slot machines, program “250” for a price of \$2.50 (10 quarters).

17. Test the coin meter and return the machine to service.

(ti1065a)